



Phase 1: (Feb 2019 to September 2021*)

Widen existing NB Clear Creek bridge and build new NB Frontage Road in Seabrook

Phase 2: (July 2020 to July 2022*)

Widen existing SB Clear Creek bridge, build new SB Frontage Road, and build majority of new Express bridge

Phase 3: (August 2020 to February 2023*)

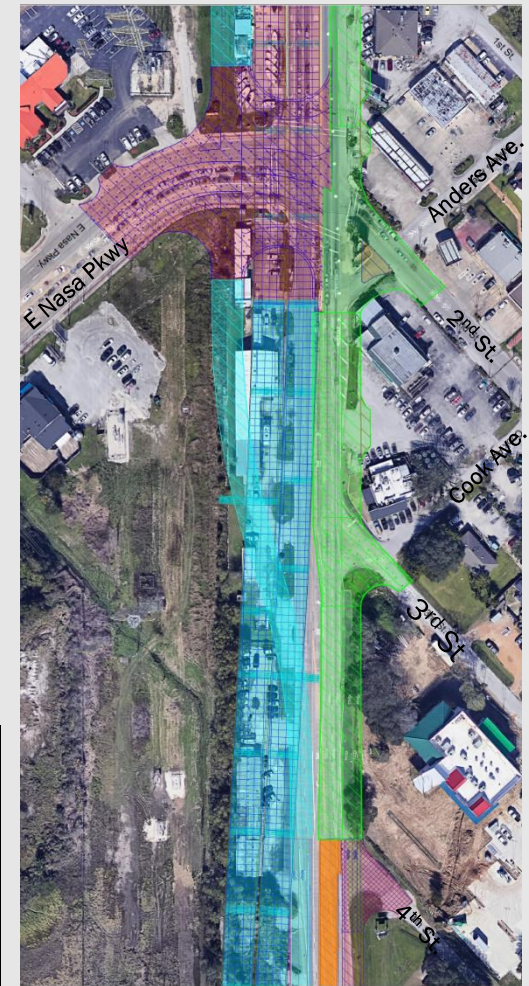
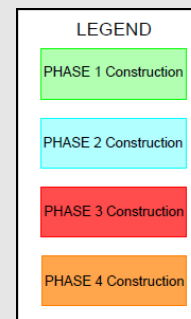
Reconstruct and elevate existing SH 146 mainlines and build new NB Frontage Road in Kemah

Phase 4: (July 2020 to April 2023*)

Build north and south ends of Express Bridge, finish SB Frontage Road in Kemah

PROJECT PHASING

Construction



* Phase durations are per latest contractor schedule and are subject to change



WWZ - SH 146 - Update: February 2021		Attachment 1 - Summary Schedule													31-Mar-21 15:27																											
Activity ID	Activity Name	Original	Remaining	Start	Finish	Total Float	2021												2022												2023											
							Feb	Mar	Apr	May	Jun	Jul	Aug	Sep	Oct	Nov	Dec	Jan	Feb	Mar	Apr	May	Jun	Jul	Aug	Sep	Oct	Nov	Dec	Jan	Feb	Mar	Apr	May	Jun	Jul	Aug					
WWZ - SH 146 - Update: February 2021		1247	585	13-Feb-19 A	15-May-23	0	[Gantt bar]																																			
Contract		1247	585	13-Feb-19 A	15-May-23	0	[Gantt bar]																																			
Milestones		1424	679	13-Feb-19 A	15-May-23	0	[Gantt bar]																																			
Utility Relocations		511	0	14-Feb-19 A	01-Mar-21	527	[Gantt bar]																																			
Red Bluff to Nasa Rd. 1		951	522	14-Feb-19 A	21-Feb-23	36	[Gantt bar]																																			
Phase 1 Step 1		938	509	14-Feb-19 A	02-Feb-23	49	[Gantt bar]																																			
Phase 1 Step 2		124	45	30-Nov-20 A	29-Apr-21	75	[Gantt bar]																																			
Phase 1 Step 3		451	77	25-Sep-19 A	11-Jun-21	75	[Gantt bar]																																			
Phase 1 Step 4		105	105	01-Mar-21	22-Jul-21	76	[Gantt bar]																																			
Phase 2 Step 1		156	107	18-Nov-20 A	26-Jul-21	40	[Gantt bar]																																			
Phase 2 Step 2		137	137	01-Mar-21	02-Sep-21	40	[Gantt bar]																																			
Phase 3 Step 1		34	34	03-Sep-21	20-Oct-21	40	[Gantt bar]																																			
Phase 3 Step 2		423	353	01-Oct-20 A	29-Jun-22	30	[Gantt bar]																																			
Phase 3 Step 3		520	520	03-Mar-21	21-Feb-23	36	[Gantt bar]																																			
Phase 3 Step 4-5		515	517	26-Jun-20 A	14-Feb-23	41	[Gantt bar]																																			
Nasa Rd. 1 to North of SH 96		881	558	22-Nov-19 A	10-Apr-23	0	[Gantt bar]																																			
Phase 1		114	114	06-Feb-20 A	03-Aug-21	240	[Gantt bar]																																			
Phase 2		806	483	22-Nov-19 A	21-Dec-22	75	[Gantt bar]																																			
Phase 3		479	479	01-Mar-21	16-Dec-22	79	[Gantt bar]																																			
Phase 4		558	558	31-Jul-20 A	10-Apr-23	0	[Gantt bar]																																			

PROJECT SCHEDULE

Construction

* Phase durations are per latest contractor schedule and are subject to change



PROJECT PROGRESS

Seabrook:

- Express Bridge (middle left and top right)
- Northbound Frontage Road Paving (bottom left and bottom right)

